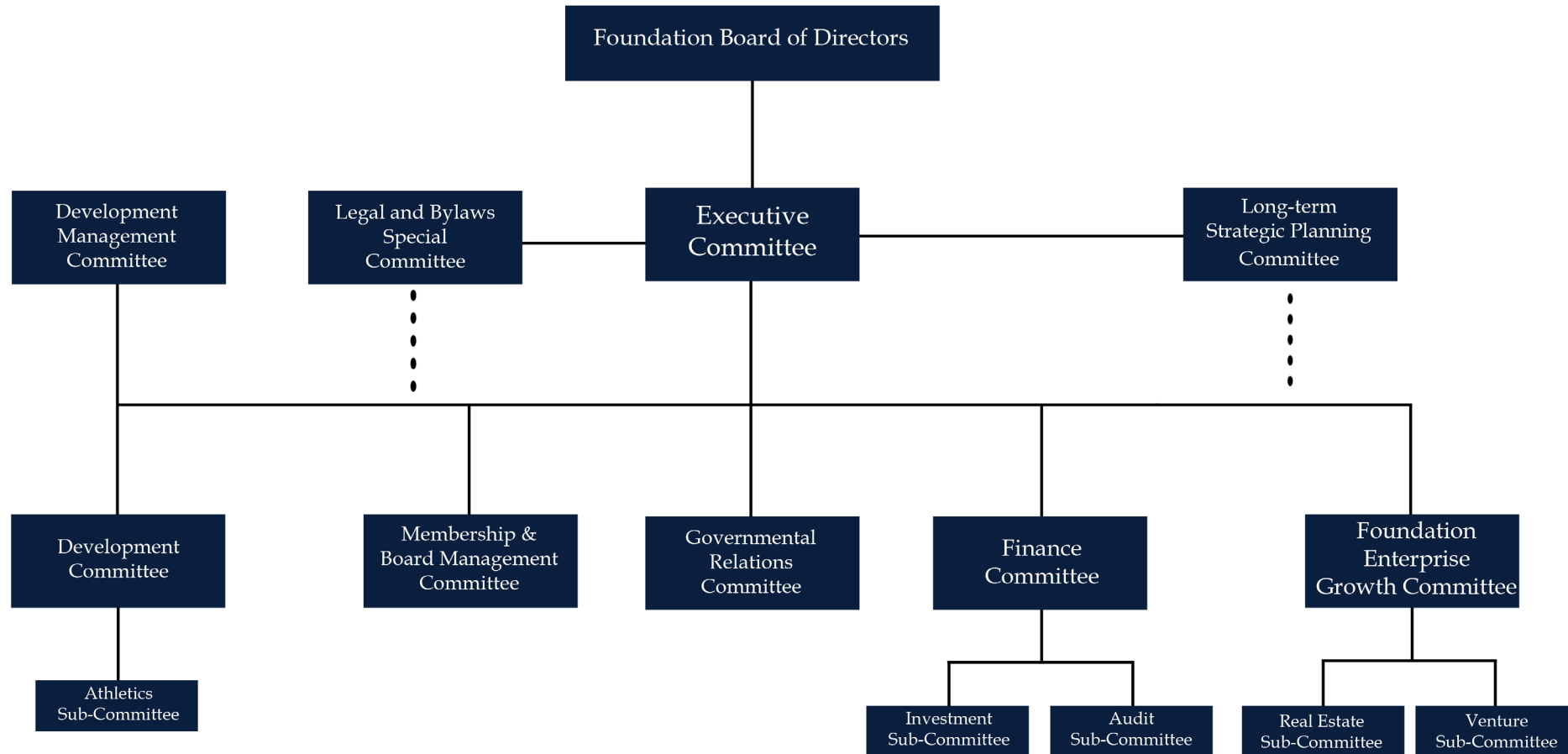


# Committees Structure



# Committees Structure

## Executive Committee

Humberto "Burt" Cabañas '76, *Chairperson*  
Adalio T. Sanchez '87, *Vice Chairperson*  
Andre L. Teixeira '92, MAcc '93, *Treasurer*  
Jill M. Granat, Esq. '87, *Secretary*  
Richard Brilliant '93, *Immediate Past Chairperson*  
Mark B. Rosenberg, *President*  
Howard R. Lipman, *Chief Executive Officer*  
Steven M. Berwick, CPA '74  
Juan R. Figueroa '81  
Michael A. Kappitt '92  
Juan J. Martinez '90, MAcc '93  
Chad Moss '94  
Elliot N. Stone  
Albert R. Taño, MD

## Finance Committee

Andre L. Teixeira '92, MAcc '93, *Chairperson*  
Juan R. Figueroa '81, *Vice Chairperson*  
Howard R. Lipman, *CEO*  
Stewart L. Appelrouth, CPA MS '80  
Dan Bell  
Steven M. Berwick '74  
Francisco Gonzalez, CPA '90  
Noel J. Guillama-Alvarez '99  
Juan J. Martinez '90, MAcc '93  
Robert M. Namoff '74  
Jonathan E. Perlman  
T. Gene Prescott  
Elliot N. Stone

## Development Management Committee

Adalio T. Sanchez '87, *Chairperson*  
Cristina di Mauro '01, *Vice Chairperson*  
Howard R. Lipman, *CEO*  
George Corton, '03, MBA '14  
Gerald C. Grant, Jr. '78, MBA '89  
Albert R. Taño, MD

## Athletics Sub-Committee

Chad Moss '94, *Chairperson*  
Howard R. Lipman, *CEO*  
Stewart L. Appelrouth, CPA MS '80  
Francisco Gonzalez, CPA '90  
Alberto Lorenzo '74  
Michael R. Mendez '03, '10

## Investment Sub-Committee

Juan J. Martinez '90, MAcc '93, *Chairperson*  
Marcel L. Navarro '93, *Vice Chairperson*  
Howard R. Lipman, *CEO*  
John M. Bussel  
Cristina di Mauro '01  
Juan R. Figueroa '81  
Noel J. Guillama-Alvarez '99  
T. Gene Prescott  
Carlos A. Sabater, CPA '81  
Elliot N. Stone  
Andre L. Teixeira '92, MAcc '93

## Legal and Bylaws Special Committee

Jill M. Granat, Esq. '87, *Chairperson*  
Esther L. Moreno, Esq. '95, *Vice Chairperson*  
Howard R. Lipman, *CEO*  
Jonathan E. Perlman  
Rafael G. Prohias

## Membership & Board Management Committee

Albert R. Taño, MD, *Chairperson*  
Trish Bell, *Vice Chairperson*  
Howard R. Lipman, *CEO*  
Humberto "Burt" Cabañas '76  
Chad Moss '94  
Carlos A. Sabater, CPA '81  
Wasim Shomar  
Candido J. Viyella

## Audit Sub-Committee

Steven M. Berwick, CPA '74, *Chairperson*  
Francisco Gonzalez, CPA '90, *Vice Chairperson*  
Howard R. Lipman, *CEO*  
Stewart L. Appelrouth, CPA MS '80  
Juan J. Martinez '90, MAcc '93  
Esther L. Moreno, Esq. '95  
Andre L. Teixeira '92, MAcc '93

## Long-term Strategic Planning Committee

Richard Brilliant '93, *Chairperson*

## Governmental Relations Committee

T. Gene Prescott, *Chairperson*  
John M. Bussel, *Vice Chairperson*  
Howard R. Lipman, *CEO*

## Foundation Enterprise Growth Committee

Juan R. Figueroa '81, *Chairperson*  
*TBD, Vice Chairperson*  
Howard R. Lipman, *CEO*  
Humberto "Burt" Cabañas '76  
Adalio T. Sanchez '87

## Corporate Ad Hoc Sub-Committee

Jason A. Saltzman, *Vice Chairperson*

## Real Estate Sub-Committee

Elliot N. Stone, *Chairperson*  
Ira D. Giller, A.I.A., *Vice Chairperson*  
Howard R. Lipman, *CEO*  
Agustin R. Arellano, Sr.  
Steven M. Berwick, CPA '74  
Noel J. Guillama-Alvarez '99  
Robert M. Namoff '74  
Marcel L. Navarro '93  
Jonathan E. Perlman  
Andre L. Teixeira '92, MAcc '93